

tele•news

Letter



WRAL - TV

NBC
REPRESENTED BY H-R

RALEIGH, N.C.

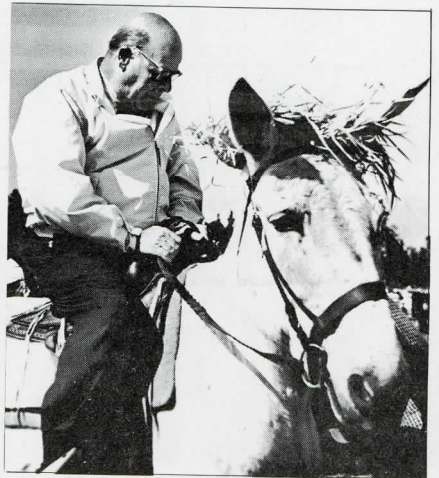
VOLUME 4 - NUMBER 4

APRIL - 1961



CHANNEL FIVE ON THE MOVE

With the purchase of a second video-tape recording machine, Channel Five's programming has taken on a new look. The equipment is mounted in a mobile van that permits taped television coverage of any event. The remote units have been used to record a Cap'n Five Show that was later telecast. It was also used to cover a steeplechase event in Southern Pines - and a half hour program was telecast the following day. One of the features of the steeplechase event was a mule race using some of the area's most improbable jockeys. In the photograph at right is shown our indefatigable Ray Reeve who proved his right to sports immortality by finishing second in the race. Not previously noted for his equestrian grace, our Sports Director trained assiduously at a local riding school for several weeks on a slow, gentle mount. It was rumored by the track touts in Southern Pines, that had not Reeve's hybrid steed carried such a weight handicap, it would undoubtedly have trotted in first to claim the horseshoe wreath.



SEE PROGRAM INSIDE

Movie Schedule

APRIL

- April 1 – 11:10 PM – COURT MARTIAL, David Niven
April 2 – 11:00 PM – INVADERS FROM MARS, Arthur Franz, Helena Carter
April 8 – 11:10 PM – THE PARADINE CASE, Gregory Peck, Ann Todd, Valli
April 9 – 11:00 PM – GOLDEN MADONNA, Phyllis Calvert, Michael Rennie
April 15 – 11:10 PM – STRANGER ON THE PROWL, Paul Muni, Joan Larring
April 16 – 11:00 PM – INTERMEZZO, Ingrid Bergman, Leslie Howard
April 22 – 11:10 PM – GARDEN OF ALLAH, Marlene Dietrich, Charles Boyer
April 23 – 11:00 PM – I'LL BE SEEING YOU, Ginger Rogers, Joseph Cotten, Shirley Temple
April 29 – 11:10 PM – CONQUEST OF EVEREST, Edmund Hillary (Narrator)
April 30 – 11:00 PM – IT'S IN THE BAG, Jack Benny, Fred Allen
-

RELIGIOUS SERVICE TO THE DEAF

Shown here is the Reverend Jerry Potter translating for the deaf, a sermon on Channel Five's new religious series, A LIGHT UNTO MY PATH. The program, which is seen each Sunday at 11:00 AM, is sponsored by the Baptist State Convention of North Carolina. Directed at the people unable to attend church, the sermons, songs and Bible study lessons are translated for what has become a sizable audience of deaf persons.



COLOR SPECTACULAR

Marineland Circus, from Florida, will be telecast April 2 at 8:00 PM, starring Lloyd Bridges, Buster Crabbe, and Captain Gallant – there are diving champions and assorted porpoises, whales and sharks. Rosemary Clooney will be mistress of ceremonies.



WRAL-TV ASSISTS DEAF OLYMPIC CONTESTANT

In response to an appeal on the Reeve With Sports show, thousands of North Carolinians mailed small contributions to Ray Reeve to assist Miss Grace Canady, champion track star, to attend the Olympic Games for the deaf in Helsinki, Finland. The program accounted for over \$2,400, over a thousand dollars over the goal. Miss Canady's translator relays the good news on one of Reeve's recent programs.